

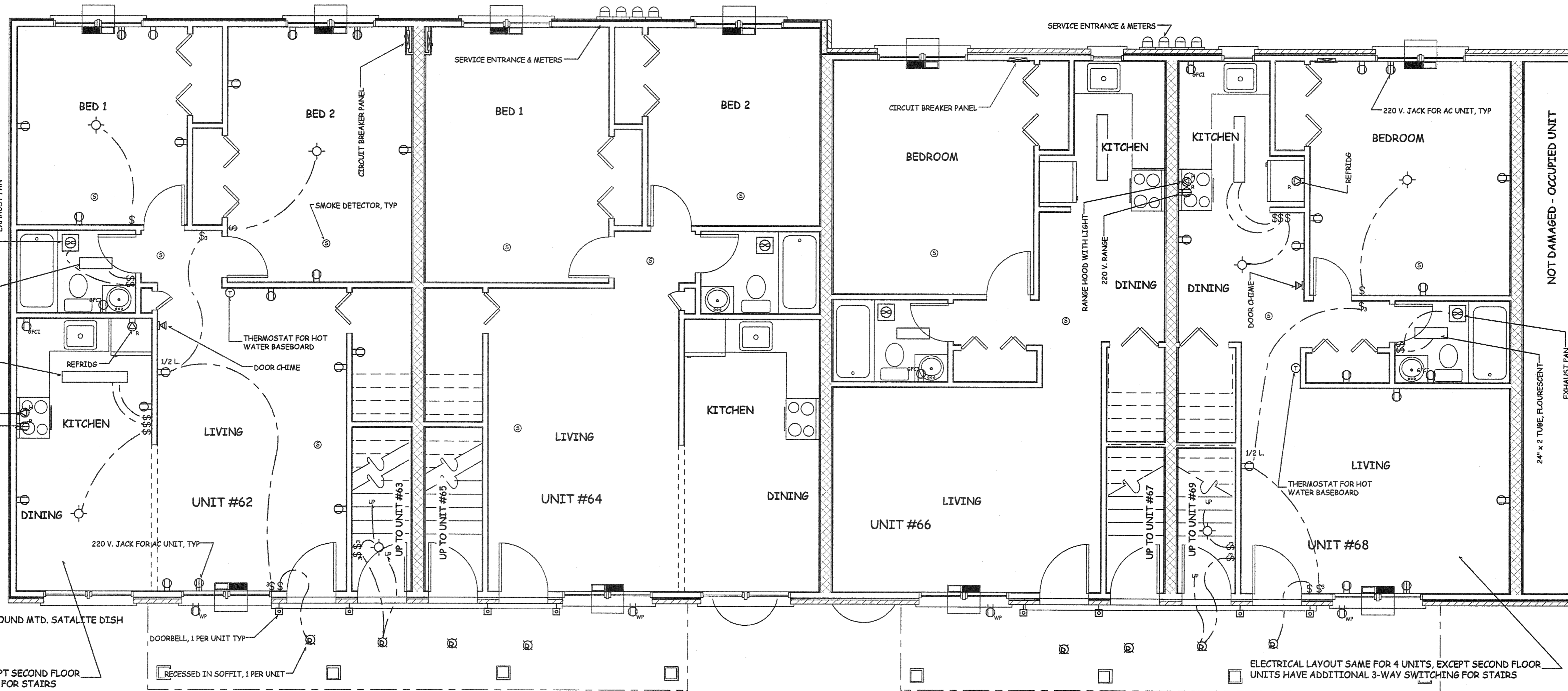
SECOND FLOOR PLAN

ELECTRICAL ONLY

2
5

ELECTRICAL LAYOUT SAME FOR 4 UNITS, SEE UNIT BELOW, AT 2nd FL., SOME ADDITIONAL 3-WAY SWITCHING FOR STAIRS & OTHER MODIFICATIONS AS SHOWN

ELECTRICAL LAYOUT SAME FOR 4 UNITS, SEE UNIT BELOW, AT 2nd FL., SOME ADDITIONAL 3-WAY SWITCHING FOR STAIRS & OTHER MODIFICATIONS AS SHOWN



FIRST FLOOR PLAN

ELECTRICAL ONLY

1
5

SCOPE OF ELECTRICAL WORK SHOWN IS BASED ON THESE 8 UNITS BEING TOTALLY "GUTTED" OF ALL DRYWALL AND INTERIOR FINISHES, AND ALL ELECTRICAL WORK TO BE NEW. MEET THE STANDARDS OF THE CURRENT CODE

THE ELECTRICAL CONTRACTOR MAY MAKE CHANGES TO LIGHTING FIXTURES SHOWN WITH THE OWNER'S APPROVAL.

PROVIDED THE SCOPE AND QUANTITY IS MAINTAINED, THE ELECTRICAL CONTRACTOR MAY MAKE SLIGHT LOCATION CHANGES TO DEVICES AS IS PRACTICAL WITH EXISTING FRAMING.

ELECTRICAL DEVICE MOUNTING HEIGHTS:
 SWITCHES: CENTER @ 48" A.F.F.
 RECEPTACLES: NORMAL CENTER @ 20" A.F.F.
 RECEPT ABOVE COUNTERS CENTER @ 44" A.F.F.

ELECTRICAL LAYOUT SAME FOR 4 UNITS, EXCEPT SECOND FLOOR UNITS HAVE ADDITIONAL 3-WAY SWITCHING FOR STAIRS

ELECTRICAL LAYOUT SAME FOR 4 UNITS, EXCEPT SECOND FLOOR UNITS HAVE ADDITIONAL 3-WAY SWITCHING FOR STAIRS

REV. #	REVISION DESCRIPTION	DATE
1	PROJECT START UP	JULY 26, 2011
2	INITIAL PERMIT SUBMISSION	AUG 31, 2011
3	ADD ELECTRICAL	SEPT 09, 2011

PLANS NOT VALID FOR PERMITS UNLESS SIGNED IN "RED" & IMPRESSED W/ SEAL

Eric C. Van Reed, Architect
 PA Reg RA008011X NJ Reg 21A00000100
Creative Design Associates, Inc.
 ARCHITECTURE INTERIORS SITE & SPACE PLANNING
 350 Callowhill Road 215-672-1155
 Chalfont, PA 18914 www.ArchitectVision.com

FIRE RESTORATION
 BELLMAWR MANOR: BLDG. # 4:
 UNITS 62, 63, 64, 65, 66, 67, 68, 69
 Borough of Bellmawr, Camden County, NJ

FIRE RESTORATION
 BELLMAWR MANOR: BLDG. # 4:
 UNITS 62, 63, 64, 65, 66, 67, 68, 69
 Borough of Bellmawr, Camden County, NJ

SCALE 1/4" = 1'-0"